

# LANDSLIDE ADVISORY (23rd Feb to 29 Feb, 2024)

## ANTICIPATED LOSSES

### Very High Risk Zones

Towns at Risk	Infrastructure at Risk	Roads at Risk (Km)	Population
18	12,319	1014.95 Km	7.1 Mn

### High Risk Zones

Towns at Risk	Infrastructure at Risk	Roads at Risk (Km)	Population
19	16,323	1431.99 Km	7.3 Mn

### Medium Risk Zones

Towns at Risk	Infrastructure at Risk	Roads at Risk (Km)	Population
15	11,043	1424.71 Km	6.1 Mn

### Low Risk Zones

Towns at Risk	Infrastructure at Risk	Roads at Risk (Km)	Population
23	15,555	1955.12 Km	8.6 Mn

## LIKELY IMPACT AREAS

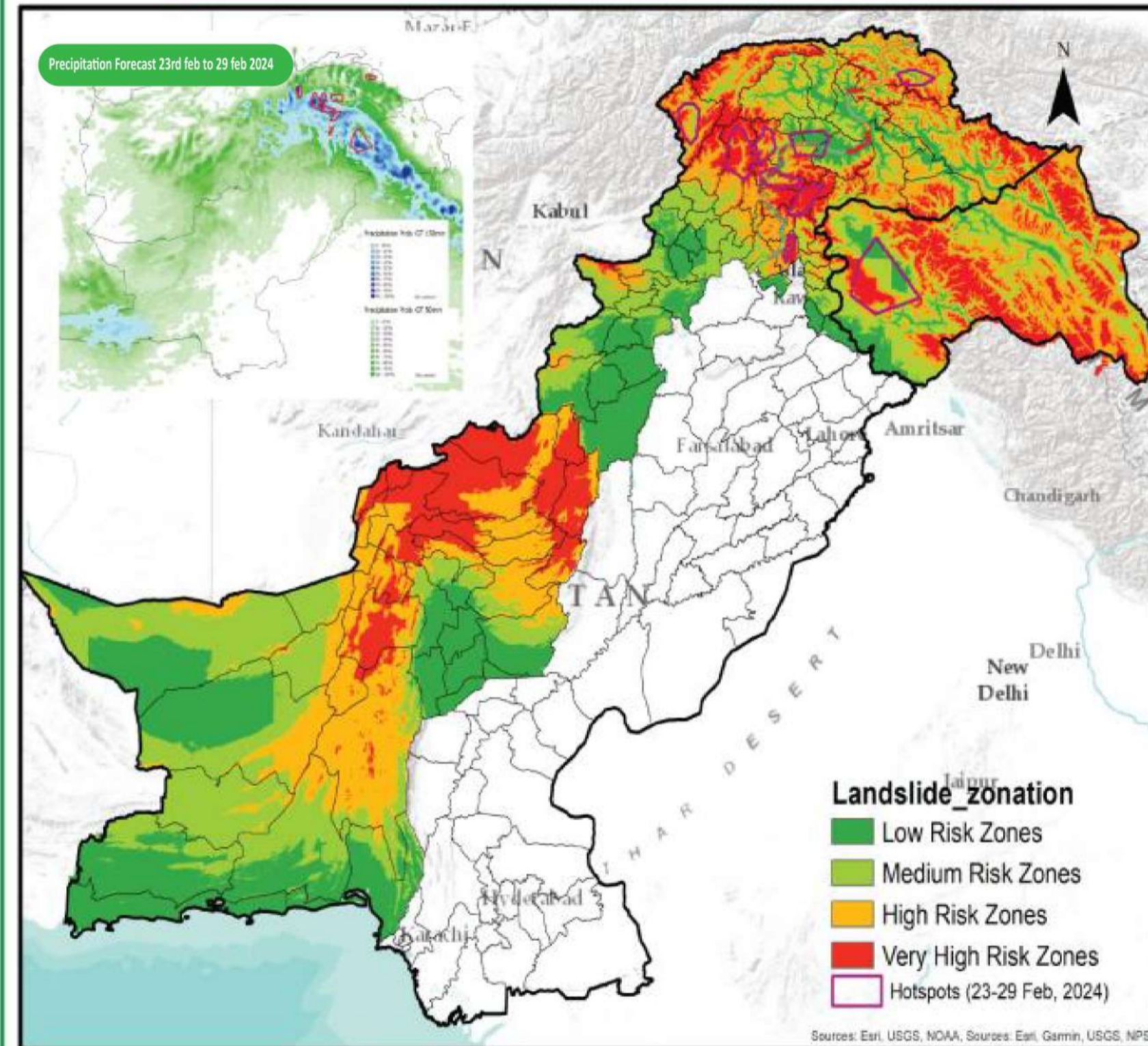
### Khyber Pakhtunkhwa

Chitral	Swat	Shangla
Battagram	Mansehra	Khyber
Torghar	Kohistan	
	Gilgit Baltistan	
Hunza	Skardu	Ghanche
Astore		
	AJ & K	
Muzaffarabad	Haveli	Bhattian
	Balochistan	
Sherani	Zhob	Musakhel
Killah Saifullah	Pishin	Ziarat
Kalat	Quetta	Mastung

## IMMEDIATE ACTION

- It is advised to be watchful of Landslides, Slope failures, Rock falls and Ground Subsidence in high vulnerable zones (encircled) in map, avoid unnecessary travel.
- PDMA, Rescue Services, Armed Forces and leading NGOs / CSOs to ensure availability of personnel / equipment in the indicated areas and be on stand-by for rapid response in case of any forecasted adverse weather systems

## Landslide Vulnerable Zones



### Forecasted Impact

- Reference to National Common Operating Picture (NCOP), most of the part of the country will receive heavy rain & snowfall in most of the country. Heavy rainfall upto 150mm is expected in some of the northern area till 29 feb, 2024.
- As heavy to moderate rain may persist for some days, localized landslides may occur in very high to moderate risk zones (shown through Hotspots)
- Karakurm highway (KKH, N35) at abbotabad (approx 30km) and at lower kohistan( approx 28km) is at high risk of landslide.
- It is advised to watchful of landslide, Slope failure, Rock falls and Groundsubsidence in high vulnerable zones in colored map, avoid unnecessary travel.
- Stay updated on weather & roads condition through official and local news.